

Longer Lifespan, Shorter Throw. A Resourceful Take on Laser Projection

LS810



Laser Phosphor. 20,000 hours lifespan. 0.24 ultra short throw

Powered by a Laser Phosphor light source system, the ViewSonic LS810 laser projector provides resource efficient solution when compared to traditional lamp-based projectors. Pure laser lasting up to 20,000 hours which delivers long-term, virtually maintenance-free usage. Featuring 1280x800 WXGA resolution and 5,200 lumens of brightness, the ViewSonic LS810 Laser Projector is the ideal solution for high-end retail and luxury commercial use. With a 0.24 ultra-short throw ratio, the LS810 can be placed just inches away from a wall or screen to project a huge image. High contrast ratio and pure laser light source displays superior image quality than other DLP projectors.

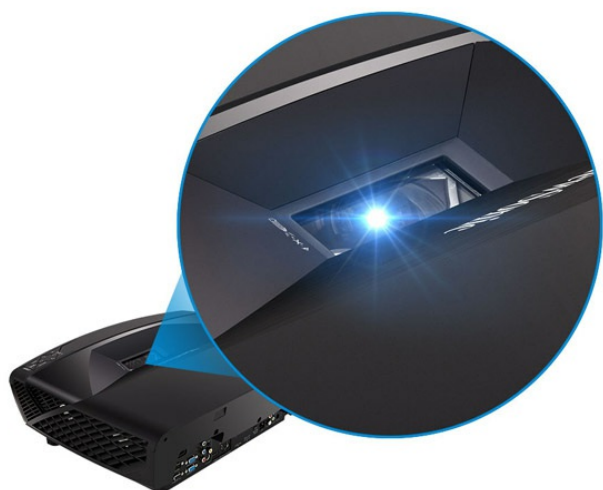
Laser Phosphor Technology

Unlike traditional lamp based projectors, LS810 is designed with a laser phosphor light source which

Long-lasting Lifespan

The laser light source offers 20,000 hours of maintenance free operation, delivering reliable

provides virtually maintenance-free usage for a lower overall total cost of ownership.



long-term performance with no degradation in brightness over time so that your installations are consistently vibrant.



High Brightness

Packed with 5,200 lumens, this projector is guaranteed to produce ultra-high brightness images that will easily accommodate even the largest spaces with high ambient light.



Ultra-Short Throw Allows for Ultimate Flexibility

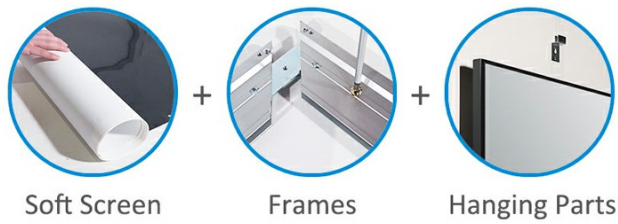
0.24 ultra-short throw lens allows for simple and flexible set up. Placing it as close 22cm* away from a wall will project a 100" image and give the projector a subtle presence. *The actual distance may vary based on environmental conditions.



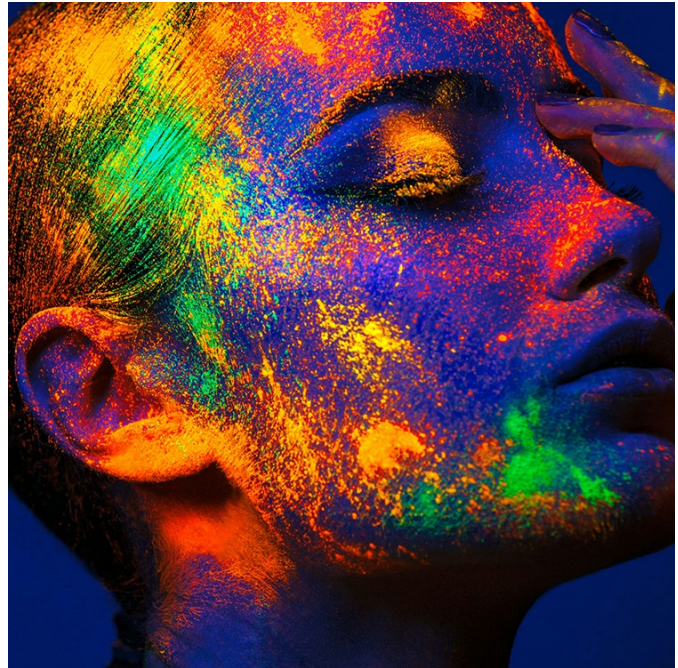
Shipping and Installation Made Easy

Wide Color Gamut

The design of optional BrilliantColorPanel™ is light and easy to transport, consisting of a roll-able soft screen that weighs in at a mere 12.5kgs (100”), making shipping and installation simple.

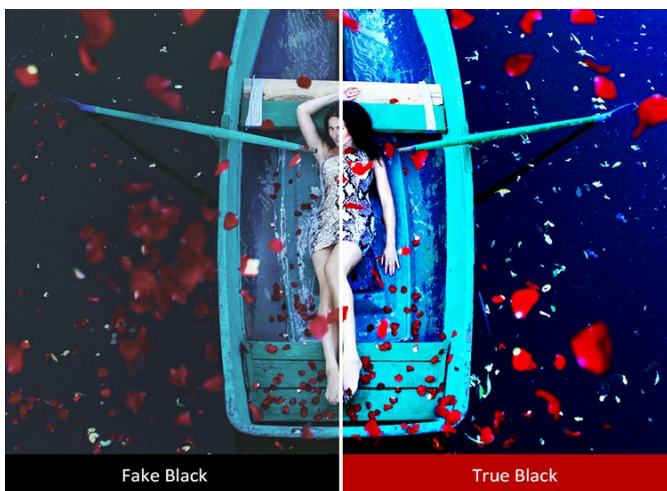


Laser phosphor technology provides wide color gamut coverage, delivering high-brightness and precision detail with deeper, richer colors.



Ultra-high Contrast Ratio

Boasting a 100,000:1 ultra-high contrast ratio, even the finest shades of color are enhanced – a key characteristic for delivering razor-sharp images.



A Spectacular Visual Sensation

With options in 100” and 120” BrilliantColorPanel™, it outputs at a 16:9 aspect ratio and offers your audience a stunning viewing experience that lends itself to the phrase bigger is better.

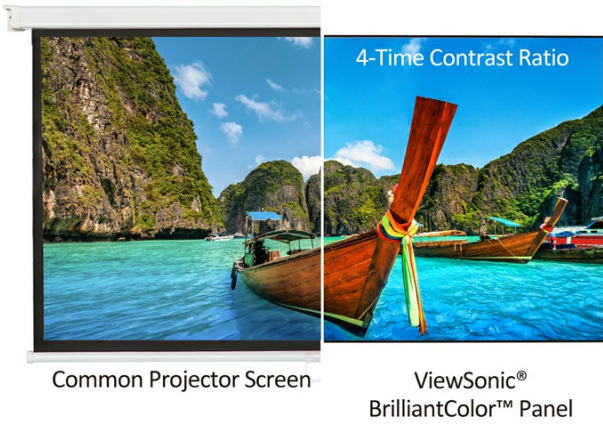


A Truly Immersive Experience

The optional BrilliantColorPanel™ achieves a contrast ratio 4-times higher than that of an average projector screen and helps to eliminate washed out images.

Stunning Display in Bright Environments

Engineered with innovative panel technology, the ridged surface of optional BrilliantColorPanel™ is designed to deflect 90% of ambient light while leaving the color being displayed on the screen unaffected.



Powerful Speaker Design, Powerful Sound

LS810's speaker system comes equipped with a 3" mid-range speaker paired with a 1" silk tweeter for achieving a more balanced, lifelike sound quality. The speaker's ported design allows sound to be thrown further for louder, more concentrated sound.

SonicExpert® Technology for Best-in-Class Sound

Unlike traditional projector speakers, LS810's high-volume chamber with ViewSonic's proprietary SonicExpert® technology delivers the absolute best-in-class sound for a premium audio experience.



SonicMode for Enhanced Audio Performance

LS810's embedded DSP chip along with SonicMode technology is able to fine tune sound performance and provides 3 different scenario application modes to choose from.

1. Standard: balanced sound for most types of audio
2. Speech: best for spoken word and conference calls
3. Entertainment: tuned for music & video with more bass



Speech Mode

Standard Mode

Entertainment Mode

AC In Component 3D VESA

HDMI

Kensington Lock Slot
LAN

Audio In/Out

Security Bar



RS232

VGA In

USB Type A

Micro USB

Audio In L/R(RCA)

12V Out

Monitor Out

HDMI/MHL

S-Video/Composite Video In USB Mini Type B

Technical Specifications

DISPLAY	Type	TI DMD 0.65
	Resolution	1280x800 (WXGA)
	F Stop / Focal Length mm	2.4
	Focus / Zoom	Adjustable by OSD menu / N/A
	Keystone	+/- 30° (Horizontal / Vertical)
	Auto keystone	Yes (Vertical)
	Display Size	80" ~ 150"
	Throw Distance	0.43 m ~ 0.8 m
	Throw Ratio	0.241
	Lamp Power	390 W
	Lamp Life (Normal / SuperEco Mode)	15,000 / 20,000 (Ecco mode) (hours)
	Brightness	5,200 Lumens
	Contrast Ratio	100,000:1
	Color Depth	1.07 Billion Colors (30 bits per color)
	Color Wheel	Dual Wheel System (RYGW) / 7200rpm
	Optical Offset	137.6 +-5%
	AUDIO	Speaker
INPUT SIGNAL	Video	480i and 576i, 480p and 576p, 720p, 1080i, 1080p
	Frequency (H/V)	15 ~ 100 KHz / 24 ~ 120 Hz
COMPATABILITY	PC	Support up to 1920x1080@60Hz
	Mac	Support up to 1920x1080@60Hz
CONNECTOR	VGA Input	x2
	VGA Output	x1
	Digital Input	HDMI x1 / HDMI (MHL2.0) x1
	Composite Input	RCA x1
	S-Video Input	x1
	Component	x2 (Share with VGA input)
	Audio Input	3.5mm mini jack x1, RCA(L/R) x1
	Audio Output	3.5mm mini jack x1, RCA(L/R) x1
	Control	RS-232
	USB	Type A x1 (Power Charging) / Mini type B x1 (Maintenance and mouse control) / Micro USB Wire x1 (Power Charging)
	Lan	x1
	3D VESA	x1
	DC Output	x1
	POWER	Voltage
Power Consumption		450 W (Max.)
Standby		<0.5W
OPERATING CONDITION	Temperature	0°C ~ 40°C (32°F ~ 104°F)
	Humidity	0% ~ 90% (non-condensing)
NOISE LEVEL	Normal / Eco Mode	28dB (Eco Mode)
DIMENSIONS	Physical (WxDxH)	508 x 392 x 165 mm/ 20" x 15.43 " x 6.5"
WEIGHT	Net	13.6 kgs / 29.96 lbs

REGULATIONS

CB, cTUVus, FCC, CE, EMC, CCC, GS

PACKAGE CONTENTS

Power Cord, 1.8m, black 1 / VGA Cable, 1.8m, black x 1 / Remote Control with Batteries (With Laser pointer) x1 / Quick Start Guide (one sheet version) x1 / ViewSonic CD Wizard (With User Manual) x 1 / HDMI Cable