



HOME > PRODUCTS > PROJECTORS > EPSON EH-TW8300

# Epson EH-TW8300



[+ ENLARGE IMAGE](#)

## Home Theatre Projectors

### High Definition Home Theatre Projector with Ultra Black Levels

[Where to Buy](#)

[Printer Friendly Specs](#)

[Distance Calculator](#)

[Download](#)



## Overview

### KEY FEATURES & BENEFITS

**Stunning 4K Enhancement** – Discover a whole new way to watch movies — the way filmmakers intended. Epson's 4K Enhancement Technology delivers an astonishing picture quality and even allows you to upscale 1080P content

**Striking Contrast Ratio** – Experience incredible black levels with an amazing 1,000,000:1 contrast ratio to experience incredible

**Lens Memory** – Allowing you to preset up to 10 positions for zoom, focus and lens shift for both standard projection and wide cinema ratios

**Amazing Colour Brightness** – 2,500 Lumens colour brightness and 2,500 Lumens white brightness

**A True Cinematic Experience** – Innovations, including Epson's unique Super-resolution with Detail Enhancement Technology, exceptional frame interpolation capabilities, as well as powerful Bright 3D Drive projection let you experience a new standard in home entertainment

**Powered Lens Shift** – Lens shift technology enables outstanding installation flexibility with an incredible range of up to ±96% on the vertical axis and up to ±47% on the horizontal axis

**Efficient Cooling System** – With noise levels as low as 20 dB, these are among the quietest projectors in the industry

**2D-to-3D Conversion** – Easily transform 2D images to spectacular 3D for unlimited 3D content



### 3LCD Technology

All Epson projectors are based on 3-chip LCD technology for amazing colour, incredible detail and solid reliability. 3LCD's 3-chip architecture dedicates an entire chip to process each primary colour – red, green and blue, continuously. Unlike single-chip technology that delivers colour sequentially, you get full-time colour. The result is vibrant, realistic images and video all delivered with 3LCD's true-to-life colour.

### Up to 3x Brighter Colours with Epson Projectors\*

Epson projectors use 3LCD Engines that have no colour wheel with a white segment and therefore don't force a tradeoff between white and colour brightness.

In fact, Epson projectors have up to 3x Brighter Colours than their leading competitive 1-chip DLP projectors\*. If you are looking for business and education projectors or 720p home entertainment projectors, know that choosing Epson projectors means up to 3x brighter colours. If you are looking for 1080p home entertainment projectors, you consistently get 2x and up to 3x Brighter Colours than competitor 1-chip DLP projectors\*.

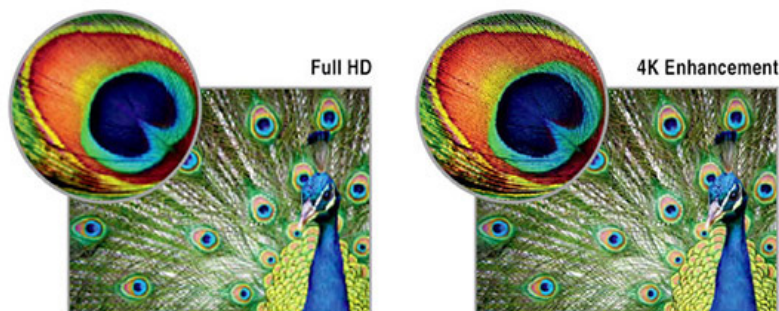
All Epson projectors list both White Brightness and Colour Brightness specifications, and all have high Colour Brightness.



### Stunning 4K Enhancement

Discover a whole new way to watch movies — the way filmmakers intended. Epson's 4K Enhancement Technology delivers astonishing picture quality. Now every subtle intricacy is captured — even your most-loved films will offer something new. Plus, Epson's Detail Enhancement Technology refines surface details for true-to-life images that pop off the screen. Users can adjust levels of sharpness and detail enhancement for optimal viewing. This isn't just a new way to watch movies — it's the best way.

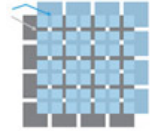
### Upscale 1080P Content



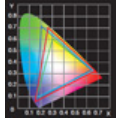
4K Enhancement makes standard and HD content come alive. From the feathers in a plume to freckles on a nose, you'll see every incredible detail.

Pixel Scaling

Epson's revolutionary 4K Enhancement Technology shifts each pixel diagonally by 0.5 pixels for twice the vertical and horizontal resolution. Enjoy unbelievable sharpness and clarity, even closer to the screen. 4K Enhancement delivers immersive images.



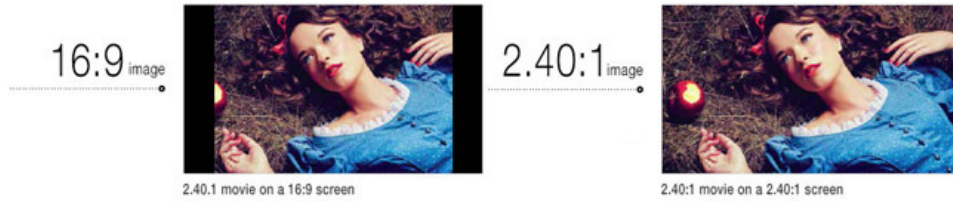
Wide Colour Gamut



Enjoy brilliant, color-rich performance. The full sRGB colour gamut is visible even in the brightest mode. And, the DCI color gamut — the digital cinema standard — is also achievable.

Lens Memory

Fast, quiet and precise, the new range allows you to preset up to 10 positions for zoom, focus and lens shift for both standard projection and wide cinema ratios. Project 2.40, 1.85 and 1.78 aspect ratios on the same screen without an anamorphic lens — and no downtime when switching between ratios. Watch movies on a grander scale at the touch of a button, without any disruptive black bars.

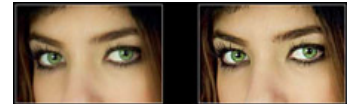


A True Cinematic Experience

Innovations, including Epson's unique Super-resolution with Detail Enhancement Technology, exceptional frame interpolation capabilities, as well as powerful Bright 3D Drive projection let you experience a new standard in home entertainment.

Super Resolution with Detail Enhancement

Super-resolution defines edges for standard and HD content, while Detail enhancement refines surface detail for true-to-life images.

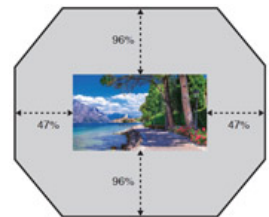


Frame Interpolation

Frame interpolation technology inserts multiple new frames between the original ones, so motion appears smoother, sharper and more realistic

Powered Lens Shift, Zoom and Focus

In addition to added reliability and amazing colour performance, Epson's advanced projection technology enables a wide range of lens shift capabilities for outstanding installation flexibility. Boasting an incredible range of up to ± 96 percent on the vertical axis and up to ± 47 percent on the horizontal axis. Users can operate the lens shift functions using the remote control, the projector control panel, or control commands.



Efficient Cooling System

When it comes to home cinema, you want to focus on what's in front of you — and nothing else, that's the idea behind the innovative, efficient cooling system of the EH-TW8300. With noise levels as low as 20 dB, this is among the quietest projectors in the industry. It's time to enjoy engaging cinema without distraction — all the better for those moments when the picture takes your breath away.

Bright 3D Drive Technology for 3D Cinematic Adventures

Enjoy thrilling 3D adventures right in the comfort of your living room. Featuring Bright 3D Drive technology, the EH-TW8300 puts you right in the middle of the action. Epson's drive system minimises the blackout time of 3D glasses and provides greater brightness when viewing 3D content.



2D-to-3D Conversion

Transform any 2D movie, from the latest science-fiction adventure to your favourite classic, to spectacular 3D, or watch the big game in exciting 3D. It's easier than ever with convenient 2D-to-3D conversion, with just the touch of a button, you can watch your favourite shows and movies in eye-popping 3D. There are no special discs required. And, the possibilities are endless.

\* Compared to leading 1-chip DLP business and education projectors based on NPD data, July 2011 through June 2012. Colour brightness (colour light output) measured in accordance with IDMS 15.4. Colour brightness will vary depending on usage conditions.



## Specification

PRODUCT NAME	Epson EH-TW8300
PRODUCT CODE	V11H713053
<b>WHAT'S IN THE BOX</b>	
	EH-TW8300 Projector, Power Cable, Remote Control + Batteries, HDMI Clamp x 2, User Manual
<b>TECHNOLOGY</b>	
Projection System	RGB liquid crystal shutter projection system
LCD Panel	0.74-inch wide panel with MLA (D9, C2 Fine, 12 bit, OD)
<b>OPTICAL</b>	
Zoom	1 - 2.1 (Optical)
Screen Size	50" to 300" [1.48 to 9.08 m] (Zoom: Wide) 50" to 300" [3.13 to 18.99 m] (Zoom: Tele)
Projection Distance	100" screen 3.0 - 6.3 m
Throw Ratio	1.35 (Zoom: Wide), 2.84 (Zoom: Tele)
Projection Lens F Number	2.0-3.0
Projection Lens Focal Length	22.5mm - 46.7mm
Focus Method	Powered
<b>IMAGE</b>	
Colour Light Output	2,500 Lumens
White Light Output	2,500 Lumens
Resolution	1080p (4K Enhancement)
Native Aspect Ratio	16:9
Contrast Ratio	1,000,000:1
Lamp Type	250 W UHE
Colour Reproduction	Up to 1.07 billion colours
Colour Processing	10 bit (Partial 12 bit)
Keystone Correction	Vertical: -30 to +30 degrees Horizontal: -30 to +30 degrees
Lens Shift (Powered)	Vertical: -30 to +30 degrees Horizontal: -30 to +30 degrees
<b>CONNECTIVITY</b>	
Input: Digital	2 x HDMI (1 x HDCP2.2)
Input: Computer	1 x D-sub 15-pin (RGB)
Input: Opt. HDMI	1 x USB A
Input: Control	1 x RS232c
Input: Network I/O	1 x RJ45, 1 x USB Type A (for optional Wireless LAN unit)
Trigger Out	3.5 mm mini-jack
Wireless Connectivity	Optional
<b>ADVANCED FEATURES</b>	
WirelessHD	No
Super Resolution	Yes
Image Enhancement	Yes
Frame Interpolation	Yes
4K Enhancement	Yes
3D Formats	Top-and-Bottom, Side-by-Side
2D to 3D Conversion	Off / Weak / Medium / Strong
Internal Speakers	No
Picture in Picture	Yes
Direct Power On	Yes
Security	Kensington®-style lock provision

## Colour Modes

2D: Dynamic, Bright Cinema, Natural, Cinema, Digital Cinema  
 3D: 3D Dynamic, 3D Cinema

**GENERAL**

Dimensions D x W x H	450 x 520 x 193 mm
Weight	Approx. 11kg
Lamp Warranty	1 Year or 750 Hours - Whichever comes first
Projector Warranty	2 Years
Power Consumption: Lamp on	355W
Power Consumption: Standby	0.35W
Noise Level	Normal / Eco: 31 / 20 dB

**PRODUCT OPTIONS**

Item Code	Description
V13H010L89	ELPLP89 Replacement Lamp
V13H134A39	ELPAF39 Air Filter
V12H003B22	ELPMB22 Ceiling Mount (Standard)
V12H526040	ELPMB30 Ceiling Mount (Flush)
V12H548001	ELPGS03 3D Glasses
V12H564C12	ELPAC01 Charger for 3D Glasses
V12H731P01	ELPAP10 Wireless LAN Adapter
V12H002S2Y	ELPSC21B 80" Portable tripod screen

Epson is the registered trademark of Seiko Epson Corporation. Epson ESC/P2 and Epson Stylus are trademarks of Seiko Epson Corporation. MicroDot is a trademark of Epson Australia Pty Limited. All other product names and other company names used herein are for identification purposes only and may be the trademarks or registered trademarks of their respective owners. Epson disclaims any and all rights in those marks. Specifications are subject to change without notice.

Equipment supplied by Epson Australia is designed to function in conjunction with genuine Epson consumables and accessories specifically configured for it.

**Usage Conditions**

Epson products are designed and made to give highly reliable use and long life when used according to its specifications. With any system, product or device used in situations where human life may be involved or at risk, Epson advises that you should take all necessary steps to ensure the suitability of your Epson product for inclusion in your system, and recommends that you include fail-safe procedures and redundancy support or backup equipment in your system, to maintain the maximum safety margin and optimum system reliability. Examples include but are not limited to – do not interfere with any electrical components within the device, do not use items supplied with the product for purposes other than as intended by Epson (ie mains cords, inks, CDs, plastic wrapping) and do not make modifications to the product.

**Consumables****ACCESSORIES & OPTIONS****PRODUCT CODE**

<b><u>ELPSC21B 80" Portable Tripod Screen</u></b>	V12H002S2Y
<b><u>ELPMB22 Ceiling Mount</u></b>	V12H003B22
<b><u>ELPMB26 Ceiling Mount for Epson Z Series Projectors (Telescopic)</u></b>	V12H003B26
<b><u>ELPAP10 Wireless LAN Adapter</u></b>	V12H731P01
<b><u>ELPAF39 Air Filter</u></b>	V13H134A39
<b><u>ELPMB30 Low Profile Ceiling Mount</u></b>	V12H526040
<b><u>ELPGS03 3D Glasses</u></b>	V12H548001
<b><u>ELPLP89 Replacement Lamp</u></b>	V13H010L89

Epson is the registered trademark of Seiko Epson Corporation. Epson STYLUS, PerfectPicture, MicroPiezo, AcuPhoto Halftoning, QuickDry are the trademarks of Seiko Epson Corporation. All other names and company names used herein are for identification purpose only and may be the trademarks or registered trademarks of their respective owners. Epson disclaims any and all rights in those marks. All print samples shown herein are imulations. Specifications are subject to change without notice.